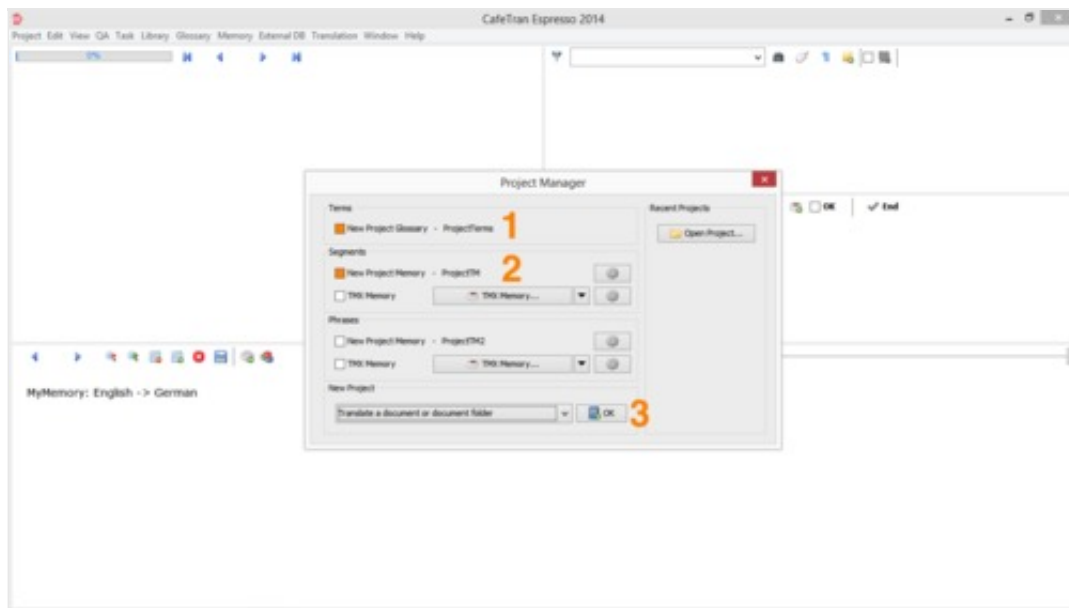


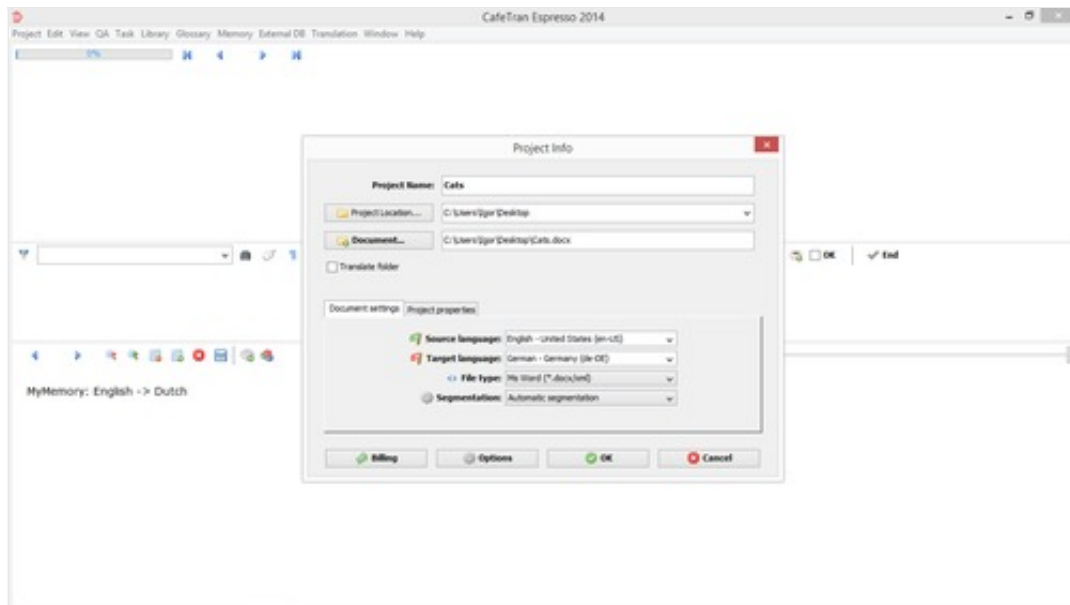
# NOTES FROM A USER

## Start » Adding glossary terms

- Start CafeTran.
- In the *Terms* group tick the *New Project Glossary* checkbox and in the *Segments* group the *New Project Memory* checkbox.
- Click the *OK* button to create a new project.

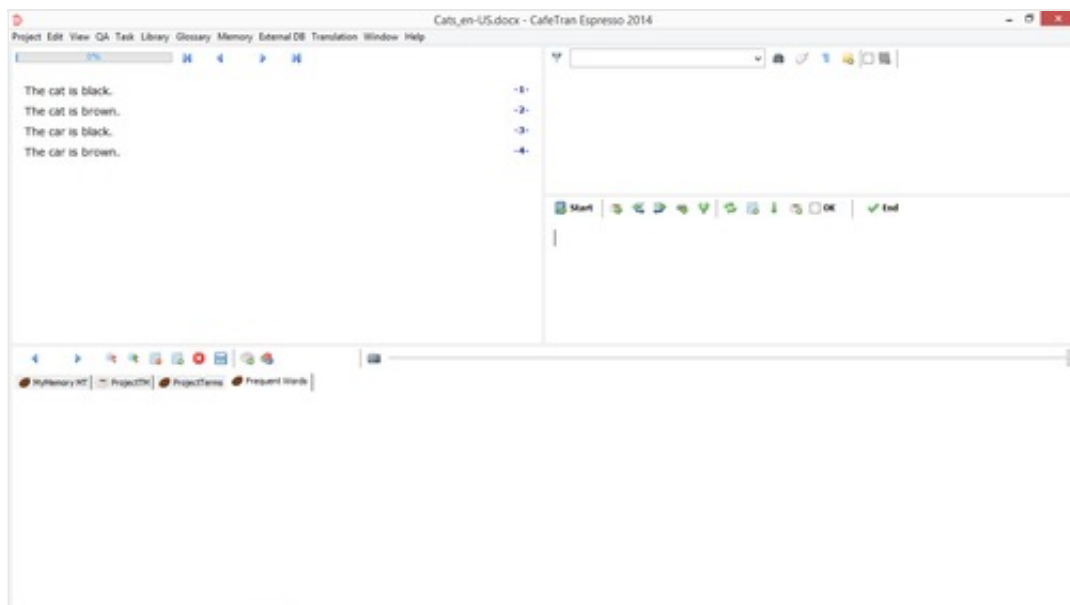


- In the *Project Info* dialogue box insert a project name.
- Adjust all other settings to your needs.

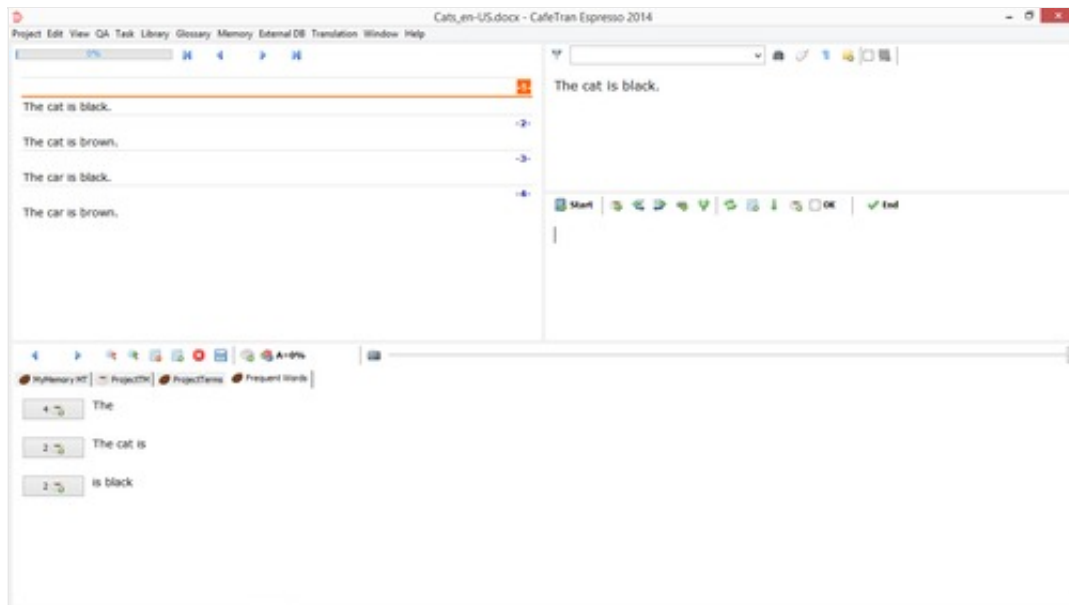


Your first document is loaded.

- Click on the *Start* icon.

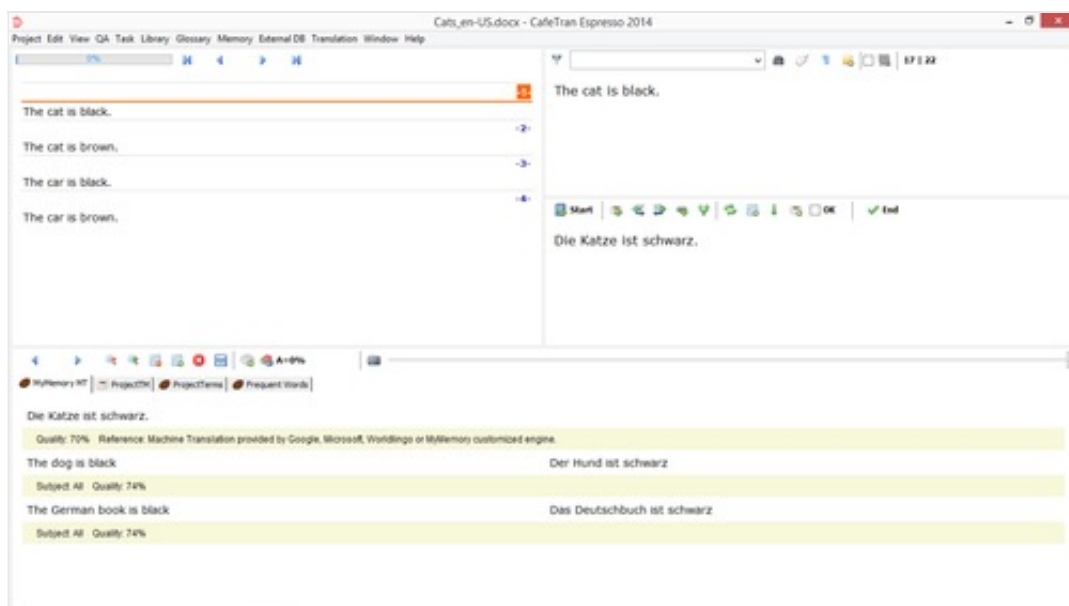


- Click on the *MyMemory MT* tab to check the machine translation.
- If you like the result, drag over the machine translation to insert it into the target text pane.

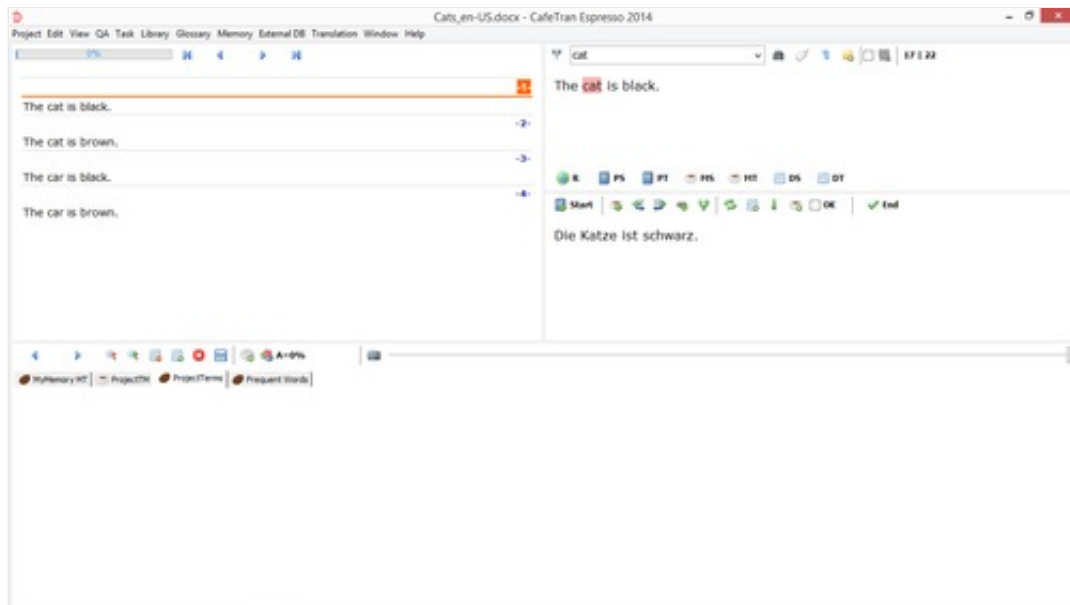


Now, let us add some terms to the project glossary:

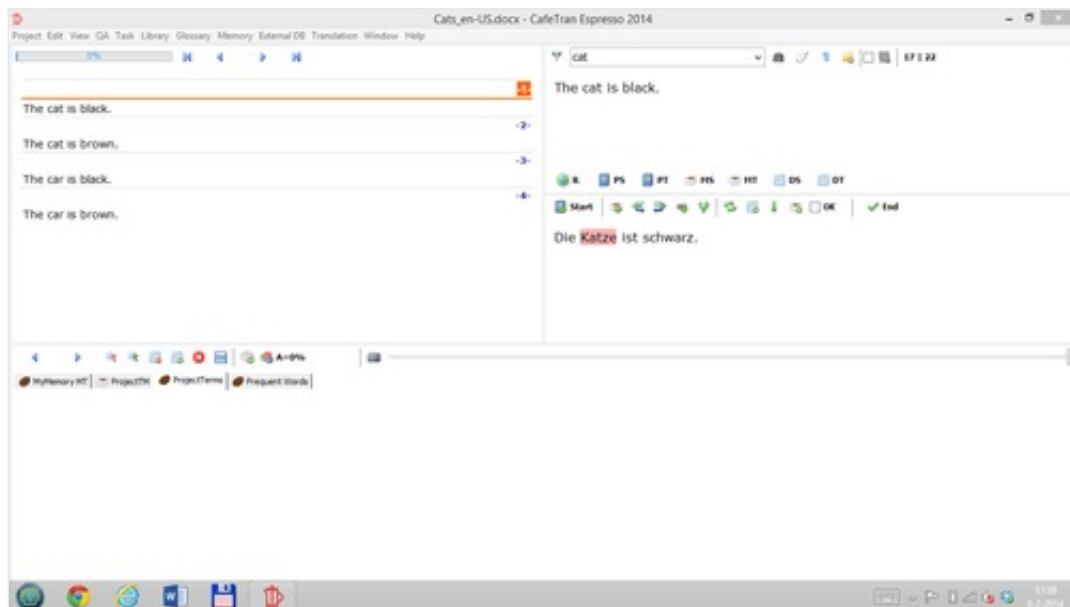
- Click on the *ProjectTerms* tab to display it.
- Select a word in the source text pane.



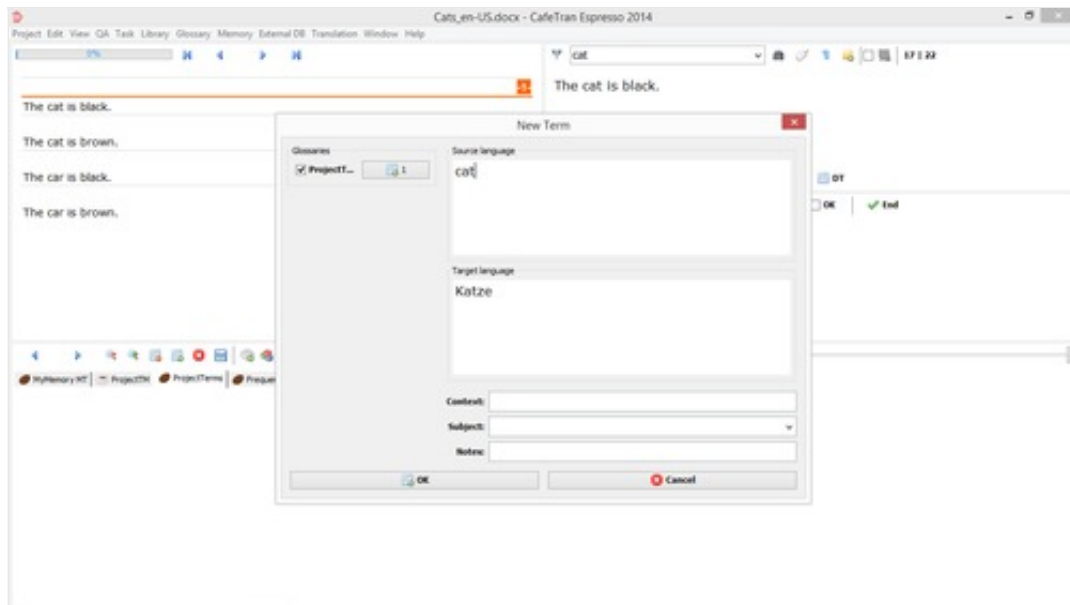
- Select the corresponding target term in the target text pane.



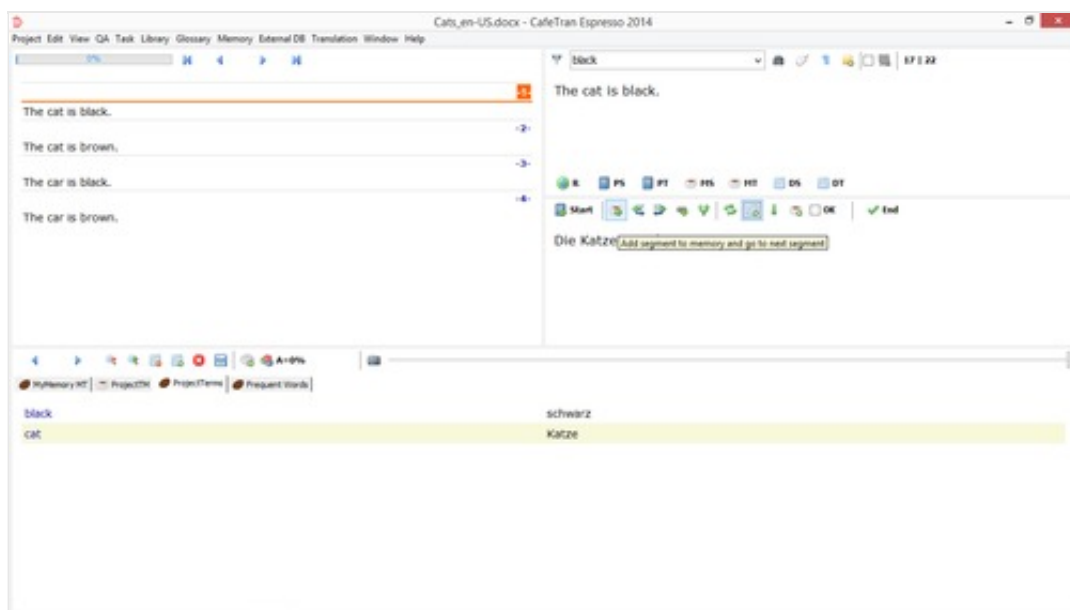
- Click on the *Add term to database or glossary* icon.



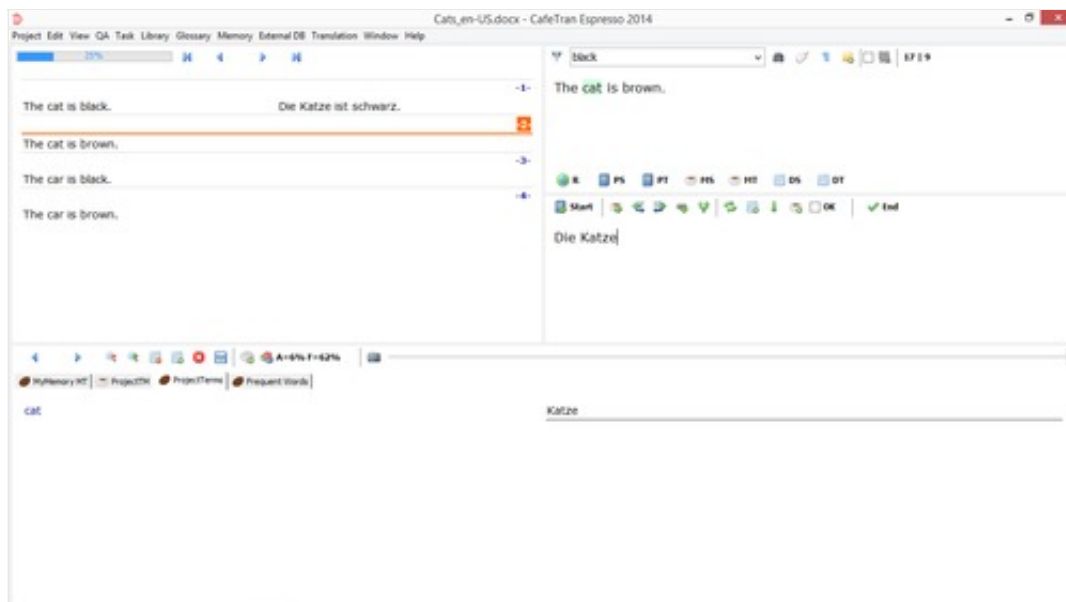
- Click on the *Add segment to memory and go to next segment* icon.



- Drag over the target term in the *ProjectTerms* tab to insert it into the target text pane.

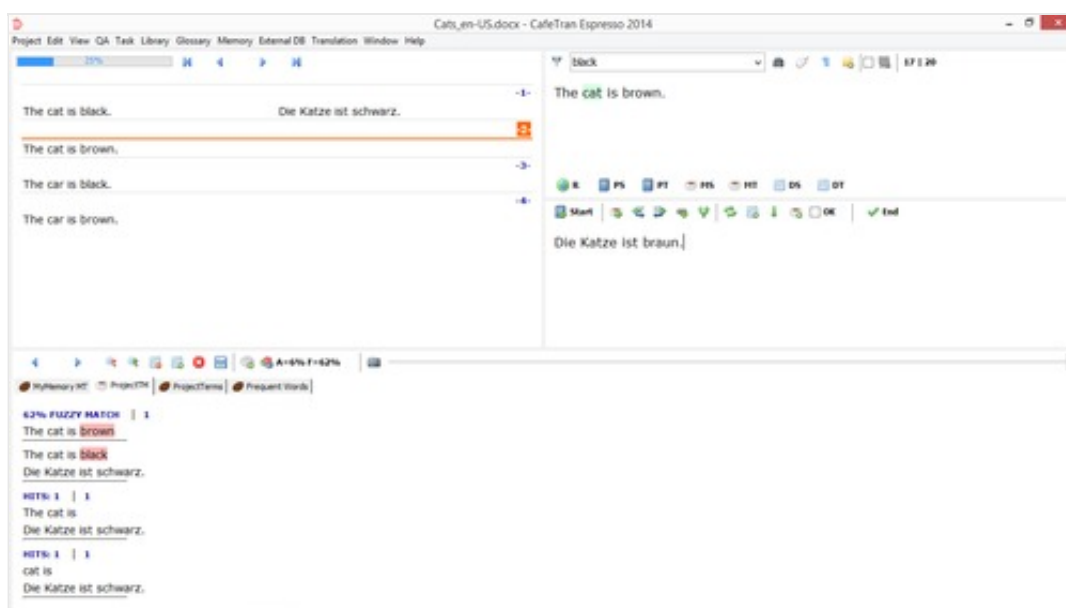


- Select a word in the source text pane.
- Select the corresponding target term in the target text pane.

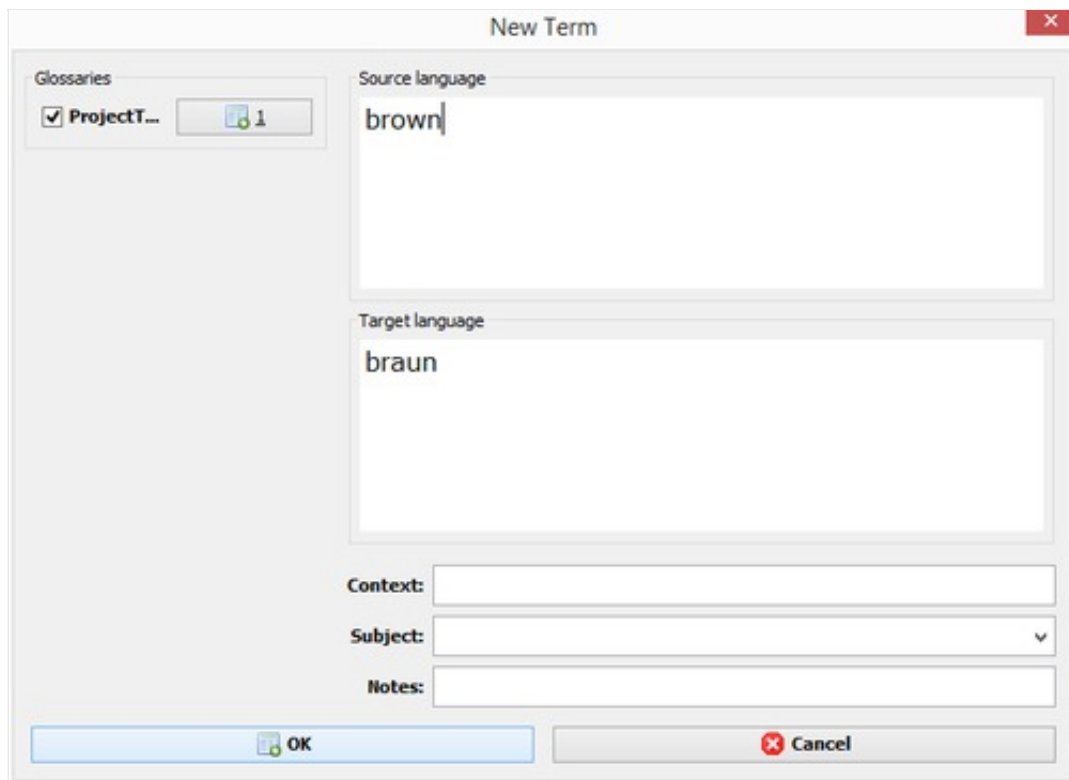


Let us proceed to the next segment to translate, whilst adding the finished translation to the translation memory:

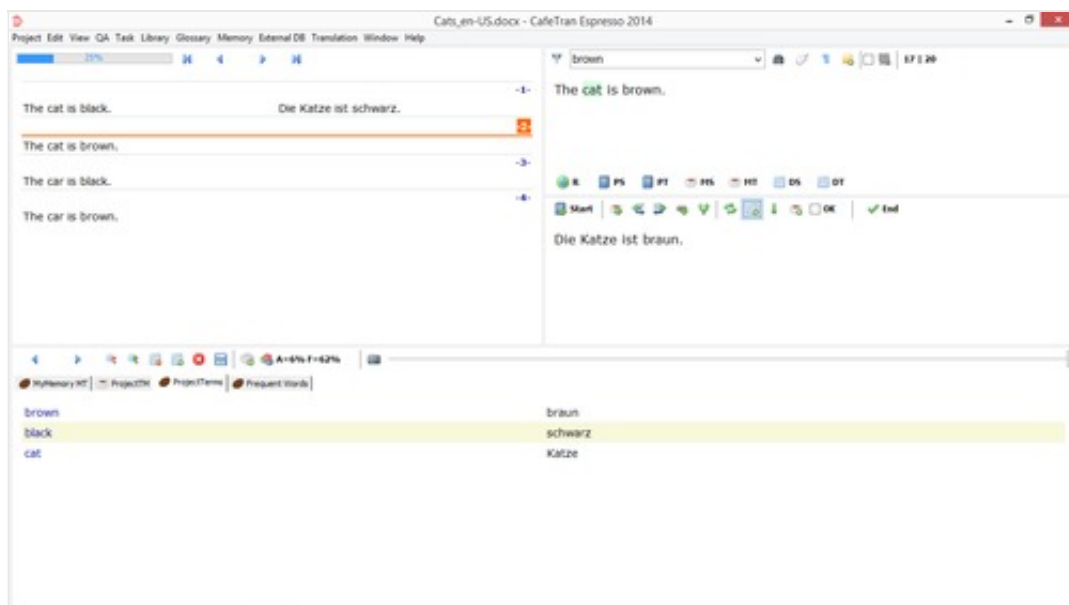
- Click on the *Add term to database or glossary* icon.



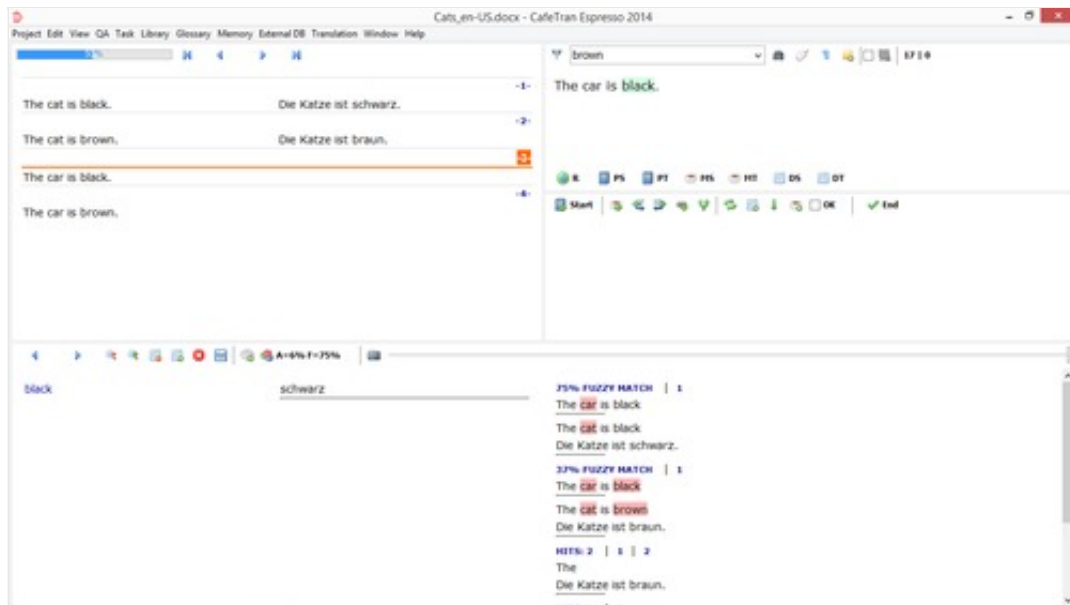
- Just for kicks, add another term pair to the glossary:



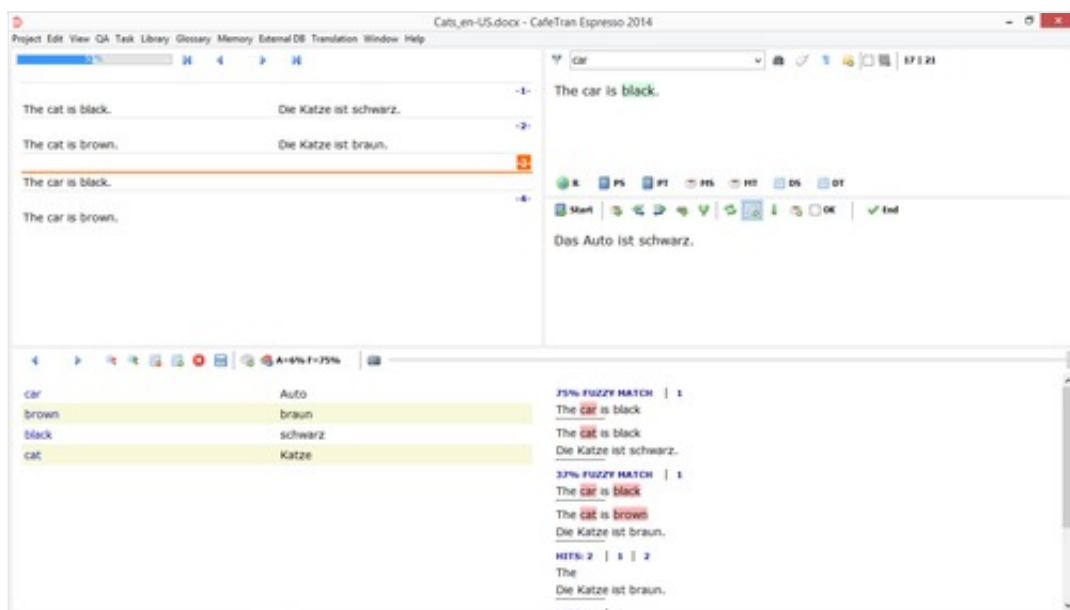
- Check the result:



- Proceed to the next segment:

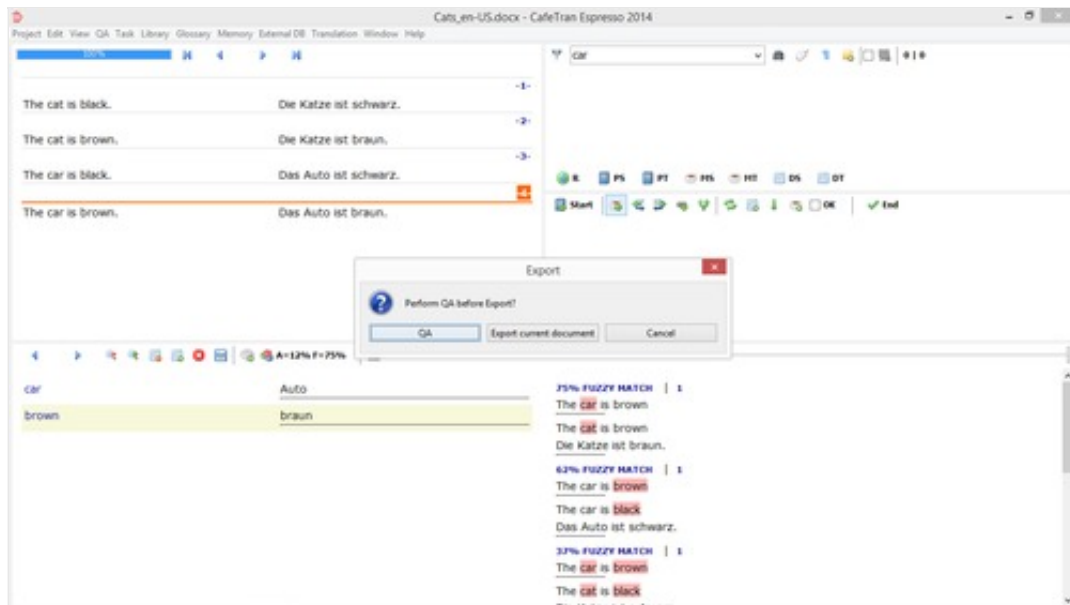


- Translate it, whilst using the results from your project glossary and the *MyMemory* tab by dragging over them.



- Export your project.





- Choose a folder for your target document.



- Check the target document.

